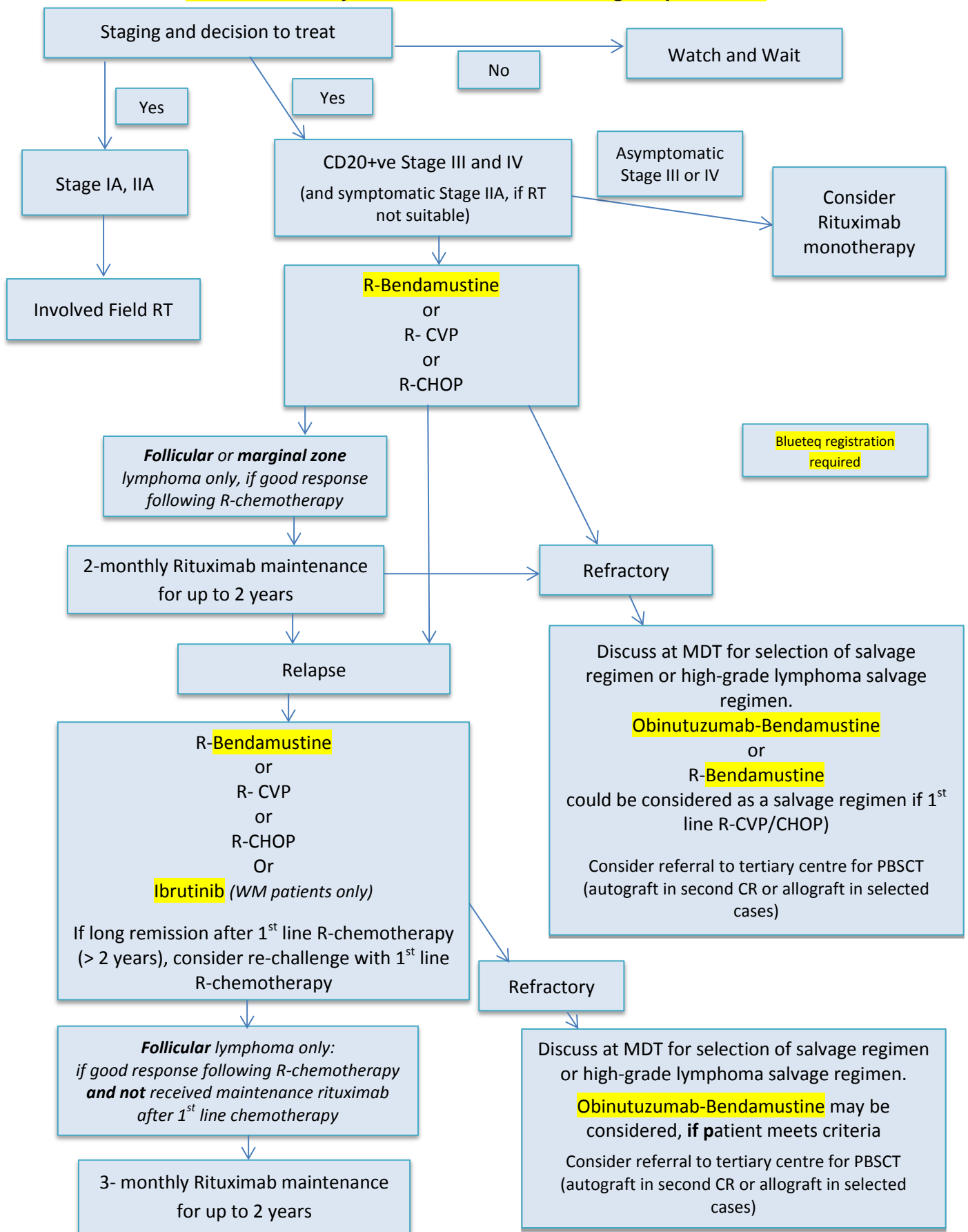


# Chemotherapy Pathway for Patients with Indolent NHL (excluding mantle cell and SLL)

\*\*\*Consider entry into clinical trials for all eligible patients\*\*\*



Version: 4	Approved by Chair of Haematology Tumour Group:
Reason for Update: Ibrutinib for WM added; Obinutuzumab + Benda added	
Prepared by:	Date: